

Bayside MLK Academy +



Bayside MLK is an Unconditional Education school. We believe **every student** deserves to experience **success** within their neighborhood school community, and every student *will* experience success when provided with an **inclusive learning environment** with the necessary supports.

WHAT ARE THE DIFFERENT LEVELS OF SUPPORT AVAILABLE TO YOUR Child?

Bayside MLK uses **Multi-Tiered System of Supports (MTSS)**, which means that different levels of support are available to meet each student's individual **academic**, **behavioral**, and **social-emotional** needs.

MTSS is made up of three tiers:

TIER 3

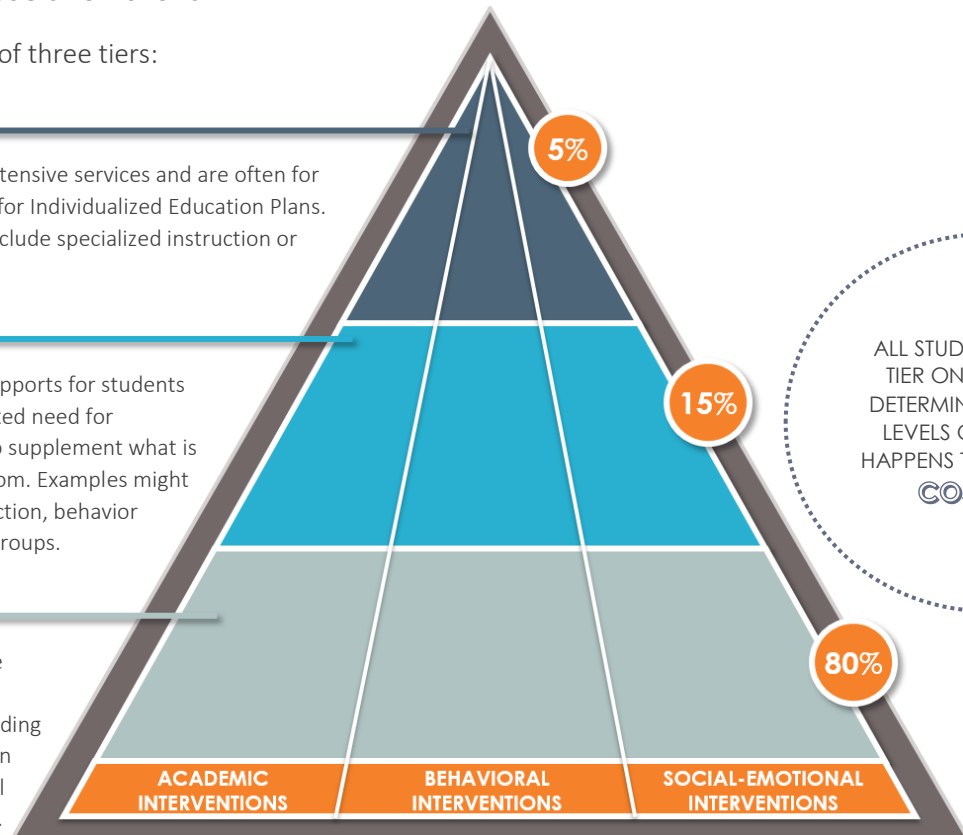
These are the most intensive services and are often for students who qualify for Individualized Education Plans. These services may include specialized instruction or therapy services.

TIER 2

These are targeted supports for students who have demonstrated need for additional supports to supplement what is offered in the classroom. Examples might be small group instruction, behavior plans, or social skills groups.

TIER 1

These are school wide interventions that all students receive including high quality instruction and school wide social emotional curriculum.



WHAT MAKES UNCONDITIONAL EDUCATION AND BAYSIDE MLK DIFFERENT?

- ✓ Unconditional Education differs from traditional education in that **any** student can receive **support services** without qualifying for special education services first.
- ✓ Services are **integrated** and **coordinated** between staff members because all staff members are responsible for providing interventions.
- ✓ Teams use **data** to identify **student's needs** as early as possible, and to monitor **progress** once students are placed in an intervention.

WHAT IS A COST (coordination of services) TEAM?



COST is a multi-disciplinary team made up of school leaders, service providers, general education teachers and support staff.

ALL STUDENTS RECEIVE TIER ONE SUPPORTS. DETERMINING THE NEXT LEVELS OF SUPPORTS HAPPENS THROUGH OUR **COSTeam**.

COST receives, reviews, and responds to **individual student referrals** made by teachers who have identified students needing additional support.

Parents and Referrers will be informed when their children are referred to COST and will be invited to share their input on student goals and interventions.

COST also identifies specific areas of need that may require a **school-wide approach**.

BAYSIDE MLK UNCONDITIONAL EDUCATION

Tier
1

Tier
2

Tier
3

	Academic	Behavioral	Social-Emotional
Tier 1	DIFFERENTIATED INSTRUCTION: <ul style="list-style-type: none"> Teachers utilize different instructional methods to accommodate to the unique academic needs of their students. 	POSITIVE BEHAVIORAL INTERVENTION SUPPORTS (PBIS) AND RESTORATIVE PRACTICES: <ul style="list-style-type: none"> PBIS is a system to implement school wide behavioral supports for all students to teach school rules and create a positive environment. Restorative practices are used to help students reintegrate into the classroom to help repair relationships after major incidents, and used as alternatives to suspension. 	SOCIAL EMOTIONAL LEARNING CURRICULUM: <ul style="list-style-type: none"> Specific social-emotional curriculum will be used to help students understand and navigate their thoughts, feelings and life experiences, enabling them better develop emotional regulation and handle conflict resolution.
Tier 2	ACADEMIC SUPPORT GROUPS: <ul style="list-style-type: none"> Students receive targeted, small group instruction from highly trained staff. Evidenced based curriculums may be utilized. 	BEHAVIOR SUPPORT PLANS: <ul style="list-style-type: none"> Individualized plans are developed to support students in increasing positive behavior and decreasing distracting or disruptive behaviors. 	SOCIAL SKILLS AND THERAPY GROUPS: <ul style="list-style-type: none"> Small groups, based on the needs of students, are provided to support students with social skills and emotional regulation.
Tier 3	INDIVIDUALIZED EDUCATION PLANS: <ul style="list-style-type: none"> Plans may include specialized academic instruction, mental health services, speech services and/or occupational therapy. 	BEHAVIOR INTERVENTION SUPPORTS: <ul style="list-style-type: none"> Behavior Support Specialists will help develop individualized service strategies and assigned staff will support students with these plans to help students learn new behaviors to improve school behavior. 	INDIVIDUAL/FAMILY THERAPY AND CASE MANAGEMENT SERVICES: <ul style="list-style-type: none"> Clinicians are available to provide mental health and case management services.

WHAT TO DO IF YOU ARE CONCERNED ABOUT YOUR STUDENT'S PROGRESS AT SCHOOL?

Please speak with your Child's teacher/team member about your concerns. The teacher/team member may recommend some interventions for the classroom and/or submit a referral to the COSTeam. Our hope is with early intervention we can address your student's individual needs.



PARTNERING AGENCIES

We partner with a wide variety of community agencies to provide a wide range of services.